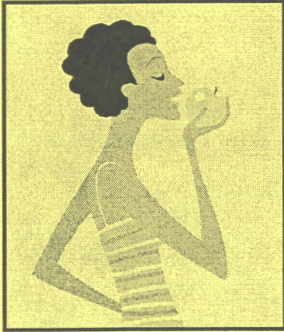


Students: Educate Yourself about the SNAP Program

Perhaps you've never considered you would be eligible to received SNAP (formerly, Food Stamp) benefits. SNAP benefits provide extra assistance to buy food, free up food money to purchase other necessities and can lead to lower electric bills



SNAP benefits are available to low-income individuals of all ages from all walks of life. Typically, traditional college students are not eligible to receive benefits. However, you may be eligible for SNAP benefits if you are between the ages of 18-49* a half or full time student, and at least one of the following applies to you:

**If you are outside this age-range or not enrolled at least half time in school you do not need to meet these guidelines*

- You work at least 20 hours each week -OR -
- You work in a state or federally funded work-study program -OR-
- You have responsibility for the care of a child under age 6 or a child age 6-12 and do not have adequate child care -OR-
- You have a disability that prohibits you from working.

If you meet the student related guidelines above, refer to the income chart on the reverse side of this form to see if you MAY be eligible

Remember...

- Grants and loans, which cover tuition costs, are not counted as income
- You cannot have a meal-plan and receive SNAP benefits
- If you live with roommates but do not share food costs you can apply as a separate household

If you need further assistance, call our SNAP Information Line at:

1-866-306-0270

URI Fienstein Center for a Hunger Free America
1-866-306-0270
August 2009

Is your family eligible for SNAP?

Low income families and single adults may be eligible for nutrition assistance through SNAP, (Supplemental Nutrition Assistance Program, formerly Food Stamps) through the guidelines below. If anyone in your household is elderly or disabled guidelines may differ slightly. Please call 1-866-306-0270 to find out more.

There are two steps to eligibility; a gross income and a net income test.

Step 1: The Gross Income Test

You might be eligible for SNAP if your household's **monthly gross income** is at or below the amount in the chart based on household size.

Household size	1	2	3	4	5	6	Each additional
Gross Income	\$1,604	\$2,159	\$2,714	\$3,269	\$3,824	\$4,379	\$555

If you meet this income guideline, go to step 2.

Step 2: The Net Income Test

To get a monthly nutrition benefit, your **net income** (gross household income minus allowable deductions) must be less than the following chart. The SNAP outreach project staff can help you determine if you meet the net income test. You can call the SNAP outreach project at 1-866-306-0270 to find out more about SNAP benefits. The Department of Human Services must make the final eligibility determination.

The following deductions will be taken to determine your net income:

- A standard deduction based on the size of your household
- An earned income deduction (20% of earned income)
- The cost of child/dependent care
- Court ordered child support paid to another household
- A portion of your shelter expenses up to a standard amount.
- Households where someone is elderly or disabled may also deduct a portion of their medical expenses

Household size	1	2	3	4	5	6	Each additional
Net income*	\$1,011	\$1,311	\$1,611	\$1,920	\$2,244	\$2,568	\$324

* Monthly income has standard deduction added to 100% federal poverty level.

1-866-306-0270 RI Food Stamp Outreach Project
www.EatBetterToday.com

