

It's important to look out for each other



It can be hard to see a friend in need when you don't know how to help them. That's why we want you to know about the new Supplemental Nutrition Assistance Program, (SNAP).

When people are going through tough times, SNAP benefits can help them buy the food they need to stay healthy. And when they use their SNAP EBT card to buy groceries, they aren't just helping themselves. They are also supporting local grocers and the local economy.

Facts about SNAP

- You can own a house or a car or have a bank account.
- You can have a job, but you don't need a job to qualify.
- Everyone who applies and qualifies will receive benefits. There are enough benefits for everyone.
- Receiving SNAP benefits can lower your electric and telephone bill.
- Receiving SNAP benefits entitles your children to receive free school breakfast and lunch.
- There is application assistance available from the SNAP outreach project!

Many people are surprised to find out they qualify for SNAP benefits!

The income limits may be higher than you think!
If you meet the income guidelines in the chart below, you may be eligible!

| Household Size | Maximum Monthly Gross Income |
|----------------|------------------------------|
| 1 | \$1,680 |
| 2 | \$2,268 |
| 3 | \$2,858 |
| 4 | \$3,447 |
| 5 | \$4,035 |
| 6 | \$4,625 |
| Additional | +590 |

Eligibility guidelines as of October 2011

Meeting the above income guideline is the first step toward SNAP eligibility.

The second eligibility step must be determined by DHS. They will deduct certain expenses from your income to see if you meet the net income test.

Call the SNAP Outreach Project toll free at 1-866-306-0270 for more information about the next step or to request an application and Eat Better Today!

So what can I do to help?

Talk to friends and family who need help. Let them know they can apply at any SNAP office.

Call the SNAP Outreach hotline at **1-866-306-0270** for the location of the nearest office to apply, to get answers to basic questions, or to find out about the process and what types of verification they will need.

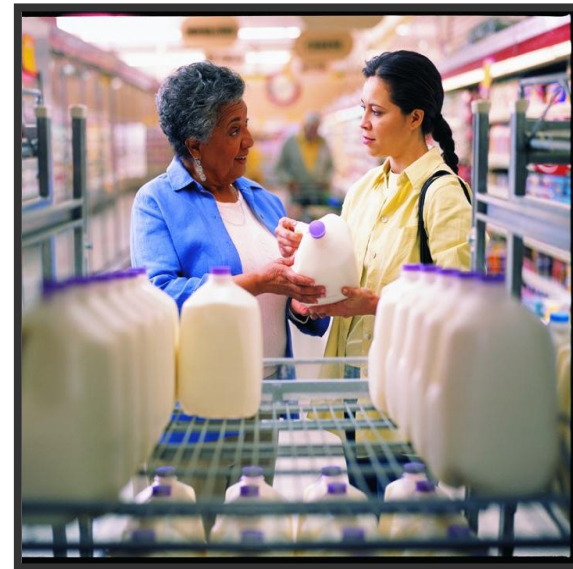
Most people will need to provide:

- Photo Identification (such as driver's license),
- Social Security numbers for everyone they are applying for,
- Proof of rent and utility costs (such as bills or receipts), and
- Proof of income (such as check stubs).

You can use the Internet to learn about SNAP at www.eatbettertoday.com or to apply for SNAP at www.foodstamps.ri.gov.

THE UNIVERSITY OF RHODE ISLAND The SNAP Outreach Project is a collaboration among the URI Feinstein Center for a Hunger Free America, RI Department of Human Services, US Department of Agriculture
The University of Rhode Island is an equal opportunity employer committed to the principles of affirmative action.

Do you know someone who needs a little help buying food?



There is a way you can help, and it won't cost you a thing.



THE UNIVERSITY OF RHODE ISLAND

